

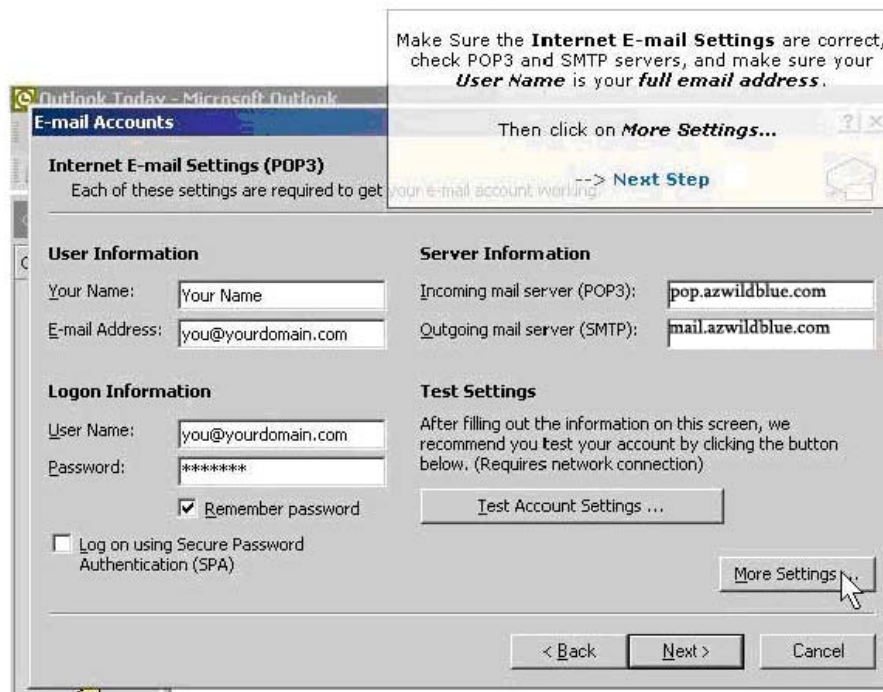
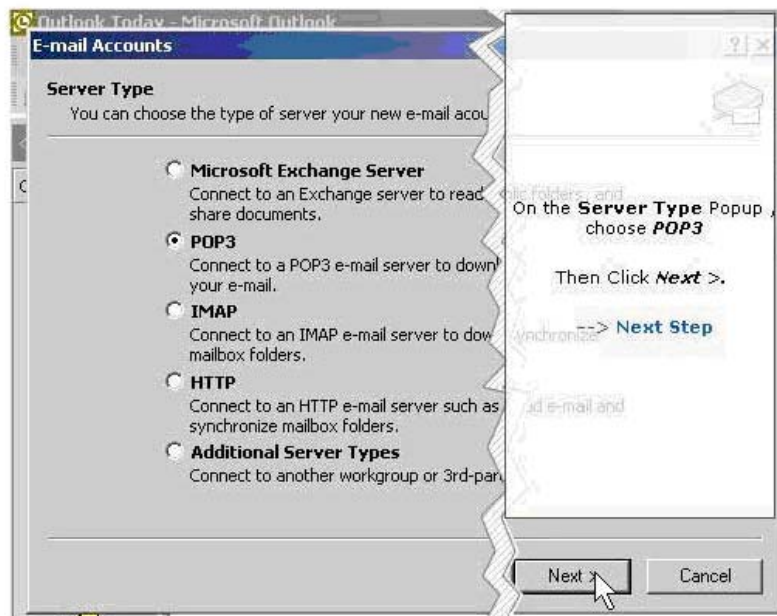
## Outlook XP New Email Account Setup

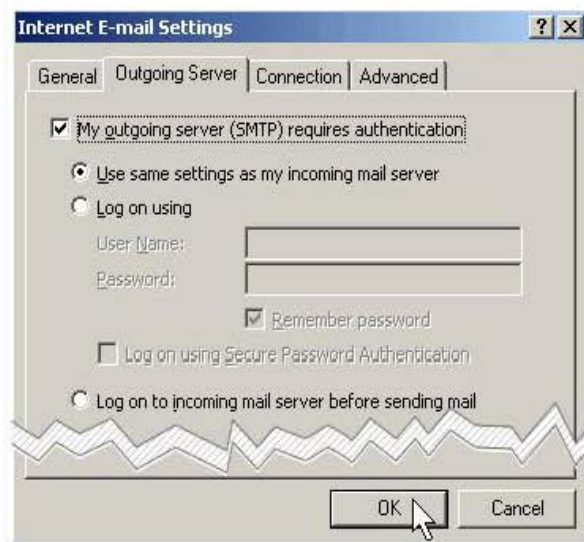
To check your mail account setup, Click on **Tools** in Outlook XP and scroll down to **E-mail Accounts...**

Click **E-mail Accounts...**

--> **Next Step**







Click on the Outgoing Server tab. Then make sure the **My outgoing server (SMTP) requires authentication** checkbox is checked.

Use the same settings as your incoming mail server as well.

Click **OK**.

--> [Next Step](#)

